



LB
ALUMINIUM
BERHAD

198501006093 (138535-V)

ALUMINIUM EXTRUSION

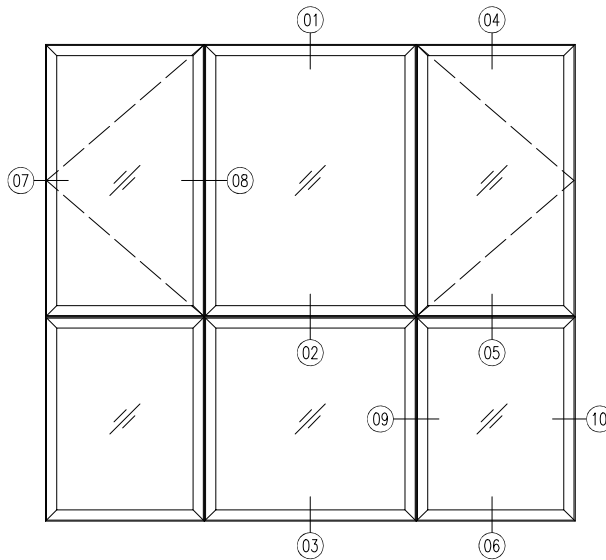
PRODUCT CATALOGUE



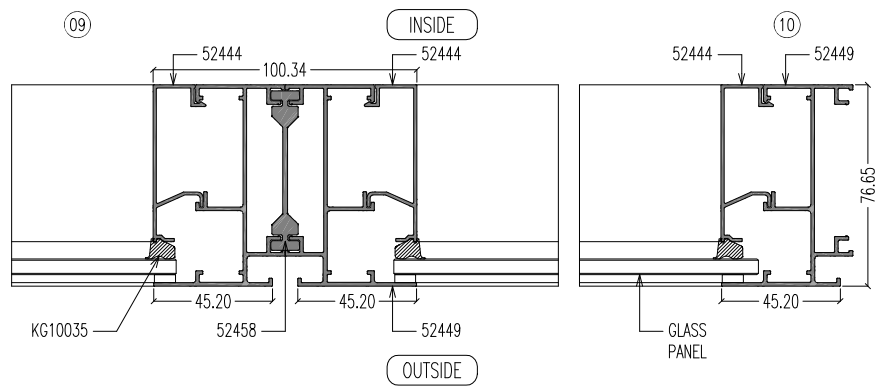
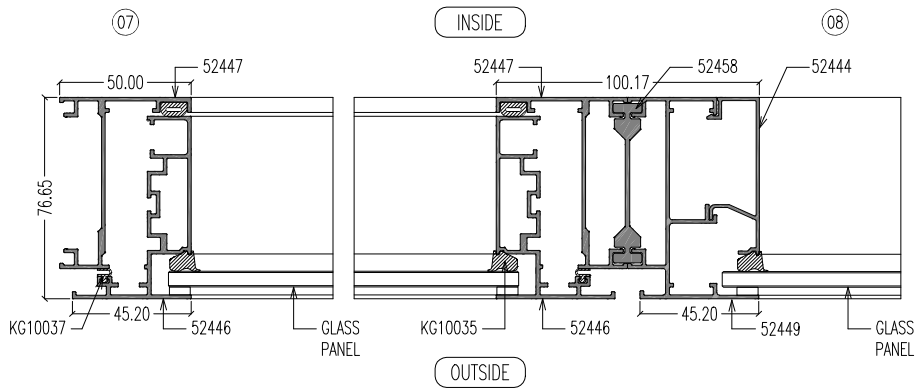
ALBEPremio[®] W01



TYPICAL ASSEMBLY SECTIONAL DETAILS



ELEVATION

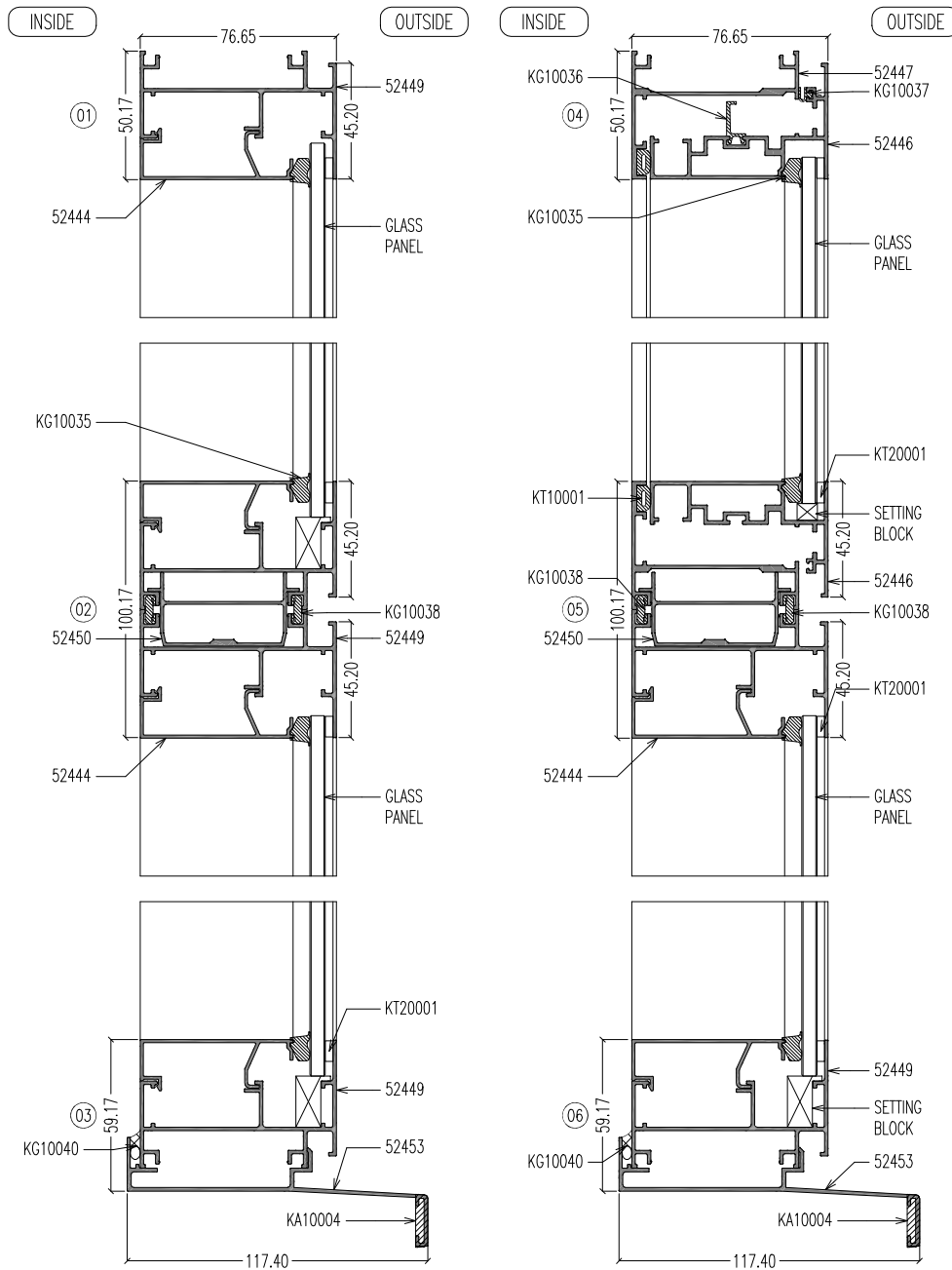


HORIZONTAL SECTIONS





TYPICAL ASSEMBLY SECTIONAL DETAILS



VERTICAL SECTIONS

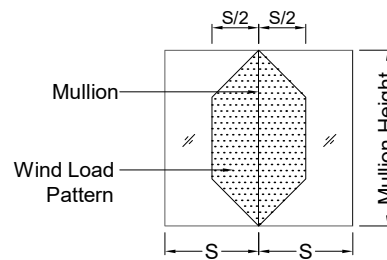
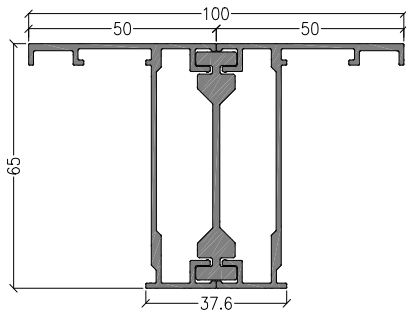


WIND LOAD CHART

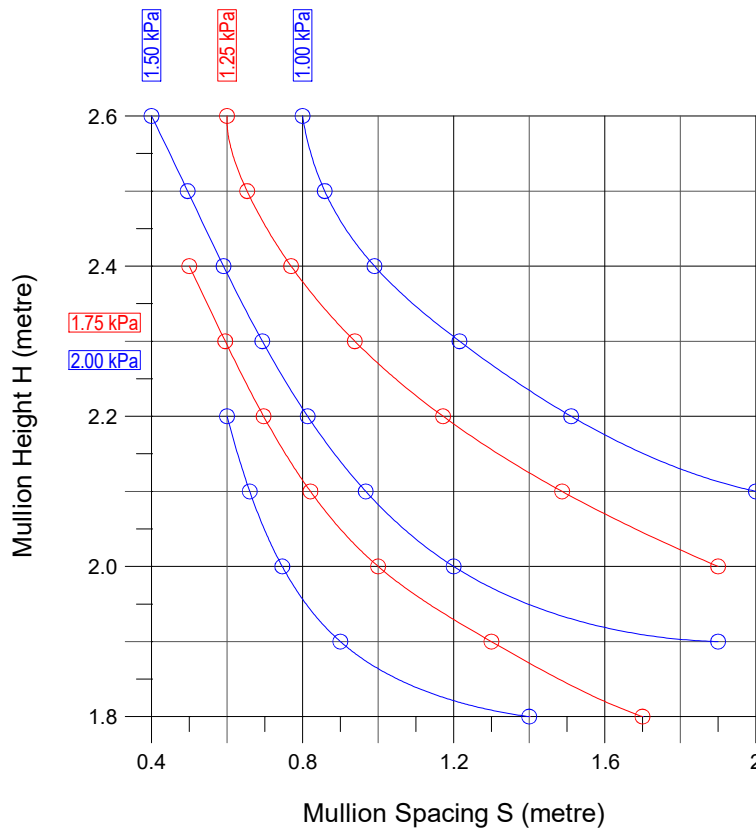
MULLION ASSEMBLY of Sections 52447x2 & 52458
 Aluminium alloy : 6063-T5
 Moment of Inertia I_{xx} : 45.06 cm⁴
 Mod. of Inertia Z_{xx} : 12.25 cm³

Mod. of elasticity : 69 x 10⁹ N/m²
 Perm. bend. stress : 1.25 x 67⁶ N/m²
(within slenderness limit)
 Deflection limit : $\text{Span} / 175$, up to max. 20mm
 Nature of anchor : Simply supported at both ends

Typical configuration of sliding door :



Note:
 Suffix xx denotes axis perpendicular to wind load



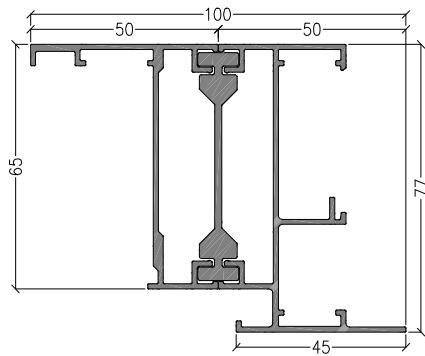
Note:
 ○ Deflection limit governs
 :- This windload chart is solely for reference only



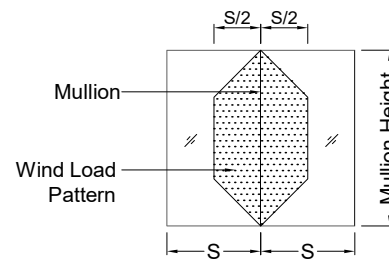
WIND LOAD CHART

MULLION ASSEMBLY of Sections 52447, 52449 & 52458
 Aluminium alloy : 6063-T5
 Moment of Inertia I_{xx} : 55.37 cm⁴
 Mod. of Inertia Z_{xx} : 14.44 cm³

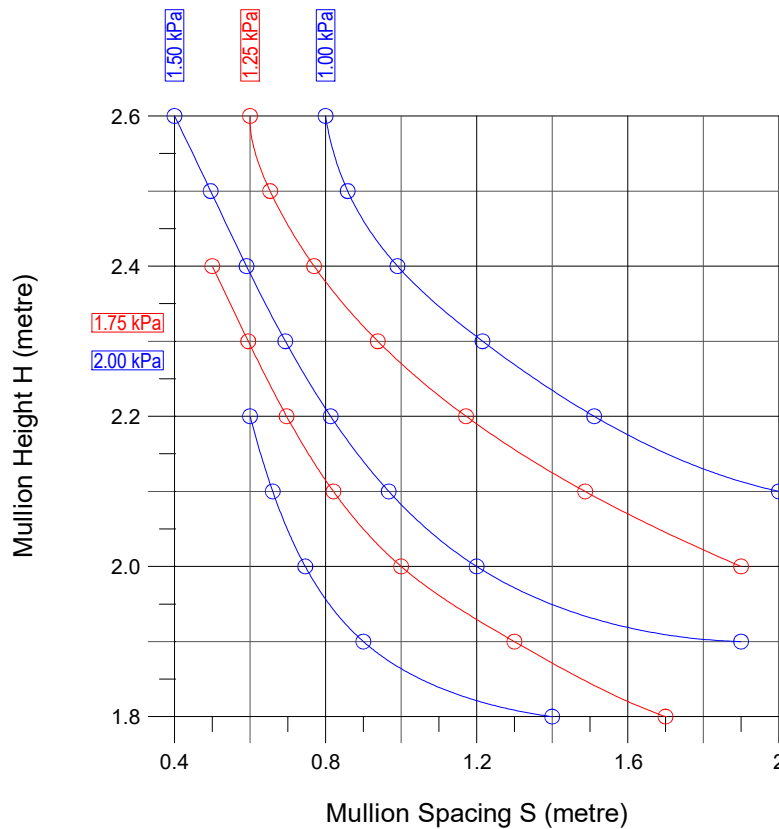
Mod. of elasticity : 69 x 10⁹ N/m²
 Perm. bend. stress : 1.25 x 67⁶ N/m²
(within slenderness limit)
 Deflection limit : $\text{Span}/_{175}$, up to max. 20mm
 Nature of anchor : Simply supported at both ends



Typical configuration of sliding door :



Note:
 Suffix xx denotes axis perpendicular to wind load



Note:
 ○ Deflection limit governs
 :- This windload chart is solely for reference only

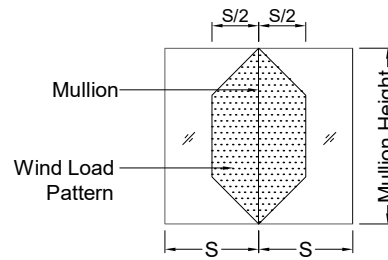
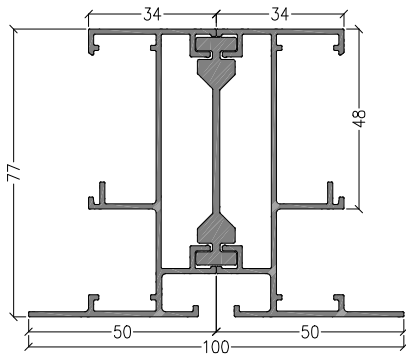


WIND LOAD CHART

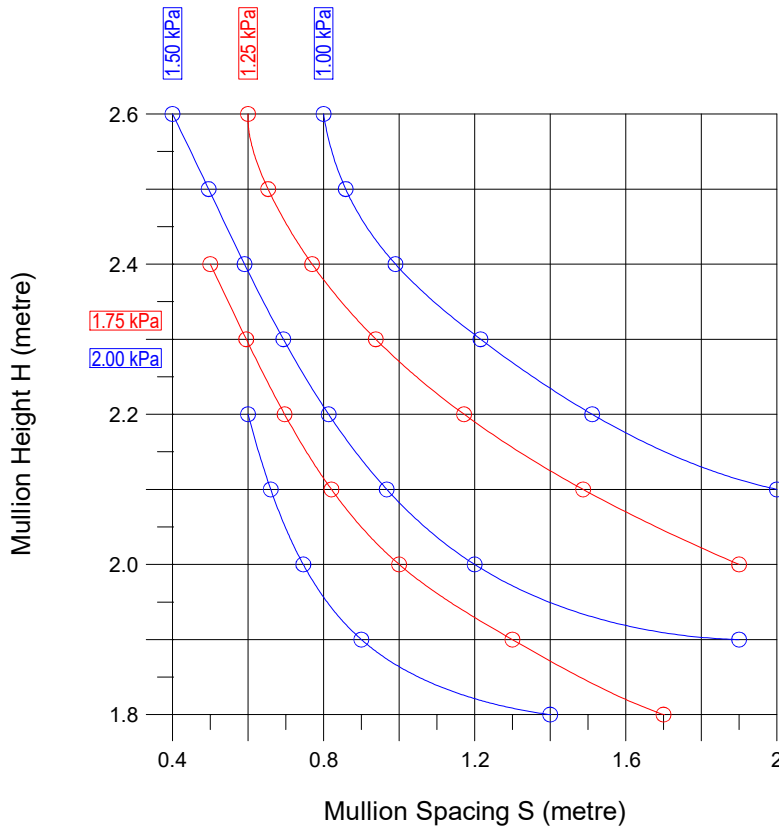
MULLION ASSEMBLY of Sections 52449x2 & 52458
 Aluminium alloy : 6063-T5
 Moment of Inertia I_{xx} : 65.68 cm⁴
 Mod. of Inertia Z_{xx} : 16.63 cm³

Mod. of elasticity : 69 x 10⁹ N/m²
 Perm. bend. stress : 1.25 x 67⁶ N/m²
(within slenderness limit)
 Deflection limit : $\text{Span}/_{175}$, up to max. 20mm
 Nature of anchor : Simply supported at both ends

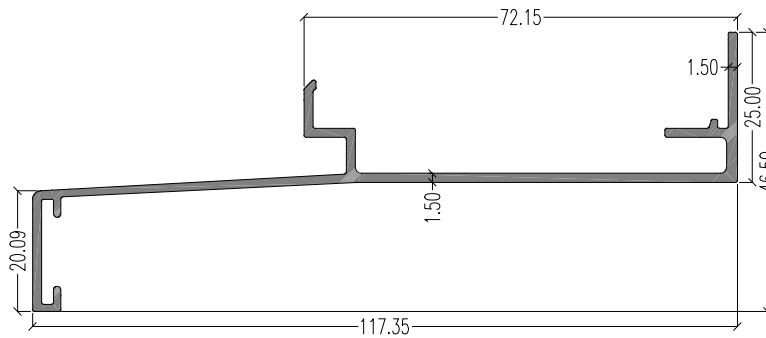
Typical configuration of sliding door :



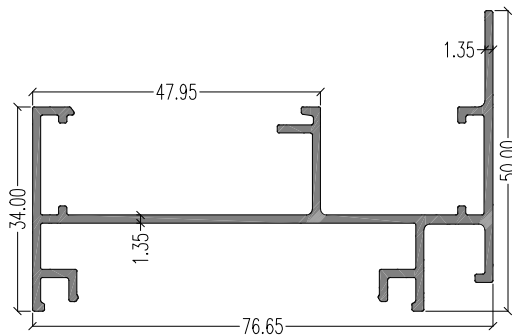
Note:
 Suffix xx denotes axis perpendicular to wind load



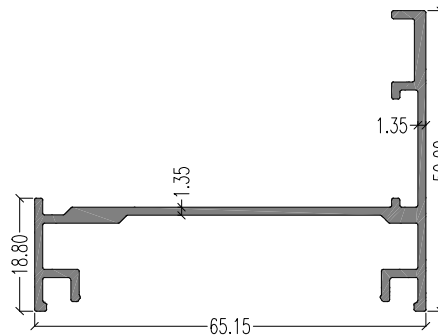
Note:
 ○ Deflection limit governs
 :- This windload chart is solely for reference only



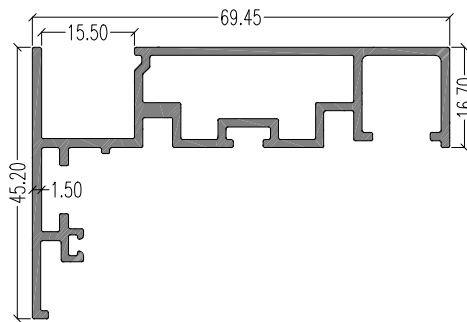
52453 (Subsill)
 LW : 0.804 kg/m
 AP : 403.22 mm



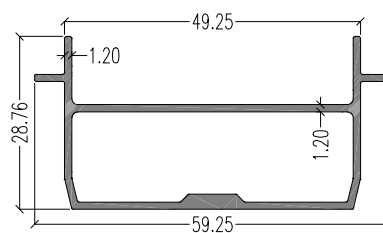
52449 (Outer - fixed panels)
 LW : 0.863 kg/m
 AP : 456.58 mm
 Ixx : 3.647 cm⁴
 Iyy : 26.27 cm⁴



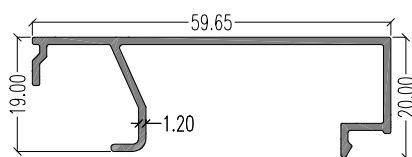
52447 (Outer - opening panels)
 LW : 0.670 kg/m
 AP : 325.23 mm
 Ixx : 3.766 cm⁴
 Iyy : 15.97 cm⁴



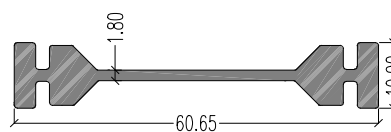
52446 (Inner - opening panels)
 LW : 0.920 kg/m
 AP : 367.10 mm



52450 (Spigot)
 LW : 0.554 kg/m
 AP : 194.05 mm
 Ixx : 1.572 cm⁴
 Iyy : 6.822 cm⁴



52444 (Beading)
 LW : 0.379 kg/m
 AP : 231.42 mm









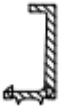

52458 (Mullion)
 LW : 0.738 kg/m
 AP : 179.31 mm
 Ixx : 0.162 cm⁴
 Iyy : 13.15 cm⁴



Product System Information [Product Name/Model : ALBEPremio W01]

Aluminium Alloy	AA 6063-T5
Joint Sealant	Silicone sealant
Operating device, bearing, device and hardware	Concealed hinge – KA20071; Window handle – KA20072 (L/R) with 2 locking point; Limiters – KA20082 (top hung); Limiters – KA20081 (L/R) (side hung)
Weatherstrip	TPV weatherstrip; EPDM foam air seal;
Glazing gaskets and sealants	TPV gaskets; EPDM foam glazing tape; Silicone sealant

TPV Gasket, Sealant and Glazing Schedule

<p><u>KT20001</u></p>  <p>EPDM Foam Glazing Tape</p>	<p><u>KT10001</u></p>  <p>EPDM Foam Airseal</p>
<p><u>KG10035</u></p>  <p>Glazing Gasket for 6mm</p>	<p><u>KG10038</u></p>  <p>Coupling Gasket</p>
<p><u>KG10039</u></p>  <p>TPV Sealant Backer</p>	<p><u>KG10037</u></p>  <p>TPV Rainscreen</p>
<p><u>KG10039</u></p>  <p>TPV Waterhead</p>	<p>Silicone Sealant</p> 

Accessories Schedule

KA20071 – Concealed Hinge



KA20072 (L/R)– Window Handle



**KA20074 –
Transmission Bar**



KA20076 – Assembly Angle



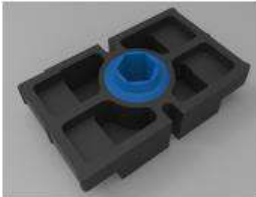
KA20075 – Assembly Angle



**Corner Chevron
18mm – KA20077
13mm – KA20078
16mm – KA20079**



KA20080 – Jack Block



KA20083 – Lock Keeper



KA20084 - Locking Pin



KA20082 – Limiter (Top Hung)



KA20081 (L/R) – Limiter (Side Hung)





**LB
ALUMINIUM
BERHAD**

198501006093 (138535-V)

HEAD OFFICE & FACTORY

Lot 11, Jalan Perusahaan 1,
Kawasan Perusahaan Beranang,
43700 Beranang, Semenyih,
Selangor Darul Ehsan, Malaysia.

Tel : +603-8725 8822 (General)
Fax : +603-8725 8828 (General)
+603-8725 8866 (Export)
Email : enquiry@lbalum.com.my

